



## Kashia Monthly Newsletter

Oct. 2022

### Upcoming Meetings

#### General Council Meeting

Nov. 12, 2022

Odd Fellows Hall

#### ARP Services

1. Rental & Mortgage Assistance
2. Temporary Hotel Assistance for COVID
3. Utility Assistance
4. Childcare Assistance
5. Vocational Training
6. Student Tutoring Assistance

Please contact the tribal office at 707-591-0580

### Tribal Elections

Saturday,

December 3, 2022

From 1:00 PM to

6:00 Pm at

SR Tribal Office

& Kashia Community Center



## FREE FISHING DAY



On September 3, 2022 some of the Kashia Community Members gathered at Horseshoe Cove on the Easement for the free fishing day, Adults and kids had a great time fishing enjoyed some lunch and some Elder gathering of mussels & clams.



EVERY  
NATIVE  
VOTE  
COUNTS





# KASHIA ANNOCEMENTS

**General Welfare Assistance Distribution :** ( formally known as per cap will be mailed out by the 15th of every quarter; February 15, May 15, August 15, and November 15.)

**Please make sure your address and contact information is up to date with the Tribal Office. You can find the forms on the tribes website at [www.stewartspoint.org](http://www.stewartspoint.org)**

## Department Services

**Housing Authority:** BIA Housing Improvement Program, Rental Assistance, Temporary Housing & Emergency Rental Assistance Program. For information please contact the Housing Authority at 707-591-0580 x106.

**Education Department:** Higher Education / Vocational Training & Direct Employment

**Kashia Youth Services:** School Uniforms/ Grade Incentives & Sports Registration. For more information please contact Brittany Sheard at 707-591-0580 x101

**Member Services:** For a full description of what is available under our Member Services Program please contact Naomi Atchley at 707-591-0580 x 124.

**we can  
help**

## DEADLINE EXTENDED

### 2023 International Ocean Calendar Project

KDEP is continuing its work with *MANIFESTO OCEAN* to create an international ocean calendar for 2023. This years theme is *ocean connections from around the world*. Each month will highlight how communities within different regions of the world use the ocean for recreational, subsistence and/or ceremonial purposes. We currently have organizations participating from Spain, Chile, Peru and the West Coast of the United States.

#### **SUBMIT WORK OF ART OR PHOTO** **Kashia Youth- Grades K-12 accepted**

**THEME:** Ocean connections from around the world. Submit a work of art or photo that illustrates your *connection with the ocean*. How do you and your family utilize the ocean throughout the year?

All submissions **must** have a description indicating ocean use and time of year/season activity is conducted (*can be on back of page*).

Include **name, contact info and grade**.

Draw/paint on an 8.5 x 11 paper or submit photo.

Artwork can be dropped off at the Kashia Tribal Office or emailed to Abreanna Gomes [abby@stewartspoint.org](mailto:abby@stewartspoint.org).

**Get  
Submissions in by  
Oct 31st!**

#### **Youth Interviews**

We encourage you to speak with relatives. Focus questions: "*How do you or have you and your family used the ocean in the past? Is there a time of year when these activities are usually done?*"

Interviewees will also receive a **\$25 gift card**.

Participants will receive a **\$25 gift card**

(based on number of submissions)



*novembro*



# KASHIA CALENDAR OCTOBER 2022

Sunday	Monday	Tuesday	Wednesday	Thursday	Friday	Saturday 1
2	3 <b>GOV Meeting 5:30</b>	4	5 <b>EDC Meeting 5:30</b>	6	7	8
9	10 <b>Language Class 6-8</b>	11	12	13 <b>TC Meeting 6:00 PM</b>	14	15
16 JuneTeenth	17 <b>GOV Meeting 5:30</b>	18	19 <b>EDC Meeting 5:30</b>	20	21	22
23	24 <b>Language Class 6-8</b>	25	26	27 <b>TC Meeting 6:00 PM</b>	28	29
30	31 					

**Interested in Becoming an Intern for KDEP's Buṭaqá: A Kashia Youth, Bear, & Habitat Project?**

**TRIBAL YOUTH & YOUNG ADULTS BETWEEN THE AGES 13-25**

**Accepting Applications for 2023 Program**

Spend the year gaining hands on experience working in the conservation field.

**Learn how to...**

- ⇒ Conduct vegetation transects
- ⇒ Identify local plants
- ⇒ Identify bear tracks and signs
- ⇒ Set up & check wildlife cameras
- ⇒ Use GPS/Read Topographic maps
- ⇒ Track seasonal changes
- ⇒ Compare habitat conditions in fire and non-fire impacted communities within Sonoma County

**\$1,200 stipend upon completion**

**A collaboration project with North Bay Bear Collaborative.**

- ⇒ Explore historical and cultural significance of bears within Kashia knowledge
- ⇒ Contribute to digital library of conservation techniques
- ⇒ Spread awareness on black bear activity and safety within the community

At least 1 field day per month. Field days will be conducted on the weekend during school months.

For more info or to receive an application please contact  
 Nina Hapner, [nina@stewartspoint.org](mailto:nina@stewartspoint.org), 707-591-0580 x 107 or  
 Abresanna Gomes, [abbby@stewartspoint.org](mailto:abbby@stewartspoint.org), 707-591-0580 x 126.

We have test kits and hand sanitizers available at the office. If you need some please call the office and arrange pick up with Brittany.

707-591-0580 x 101

# Mussel Sampling Update



## Tribal Marine Stewards Network (TMSN): Update

### Mussel Sampling Update

KDEP Staff scouted for mussels at the KCR Beach in April, May and July. Mussel samples were sent to California Department of Public Health (CDHP) laboratory in Richmond, CA where they were tested for paralytic shellfish poisoning (PSP) toxins and domoic acid.

Here are the results:

Months	Micrograms (mg) PSP Toxins	Grams (g) of Mussel Tissue
April	35 mg	100 g
May	35 mg	100 g
July	35 mg	100 g

The action level for protecting consumers of shellfish is 80  $\mu\text{g}/100\text{g}$  (micrograms PSP Toxin per 100 grams of shellfish).

### What is Paralytic Shellfish Poisoning (PSP)?

Paralytic Shellfish Poisoning (PSP) is a naturally occurring marine biotoxin that is produced by some species of microscopic algae. Shellfish eat these algae and can retain the toxin. People can become ill from eating shellfish contaminated with Paralytic Shellfish Poison. This biotoxin affects the nervous system and paralyzes muscles, thus the term "paralytic" shellfish poison. High levels of Paralytic Shellfish Poison can cause severe illness and death.

Volunteer to help collect mussels!

We are still conducting Mussel Samplings.

Contact Abreanna Gomes, [abby@stewartspoint.org](mailto:abby@stewartspoint.org) or Nina Hapner, [nina@stewartspoint.org](mailto:nina@stewartspoint.org).

6



## Tribal Marine Stewards Network (TMSN): Update

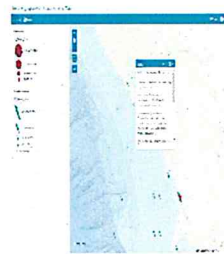
### Phytoplankton Monitoring

Kashia is collaborating with the California Department of Public Health (CDPH) to begin phytoplankton monitoring on the coastal reserve. The CDPH Marine Biotoxin Program coordinates a volunteer-based monitoring effort for toxic phytoplankton along the entire California coastline.

A phytoplankton net made of a very fine and fragile nylon mesh and rope will be provided to KDEP Staff. The net will be used to retrieve samples of phytoplankton in the water from depths of 10 to 50 feet, depending on the sampling location. The loose end of the rope will be secured to the pier or other structure to avoid losing it! The net will be gently dunked and following the final tow, the net is retrieved and the sampling bucket at the bottom of the net is detached. The contents of the sampling bucket will be poured into the sampling bottle provided, which contains a small amount of preservative. The sample is then placed in the mailing canister along with the completed laboratory sample submission form, which will be sent to CDHP to be examined for toxin-producing species.

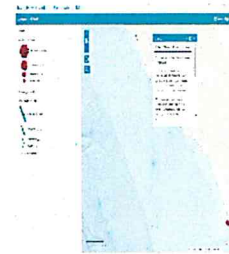
Here are the results:

8/16/2022



This sample did not contain any *Pseudo-nitzschia* or *Alexandrium*.

9/13/2022



The percent composition of *Pseudo-nitzschia* was estimated to be 1%, which is in the PRESENT category. This sample did not contain a detectable quantity of *Alexandrium*.

For more information about phytoplankton check out this webpage: <https://www.cdph.ca.gov>

5

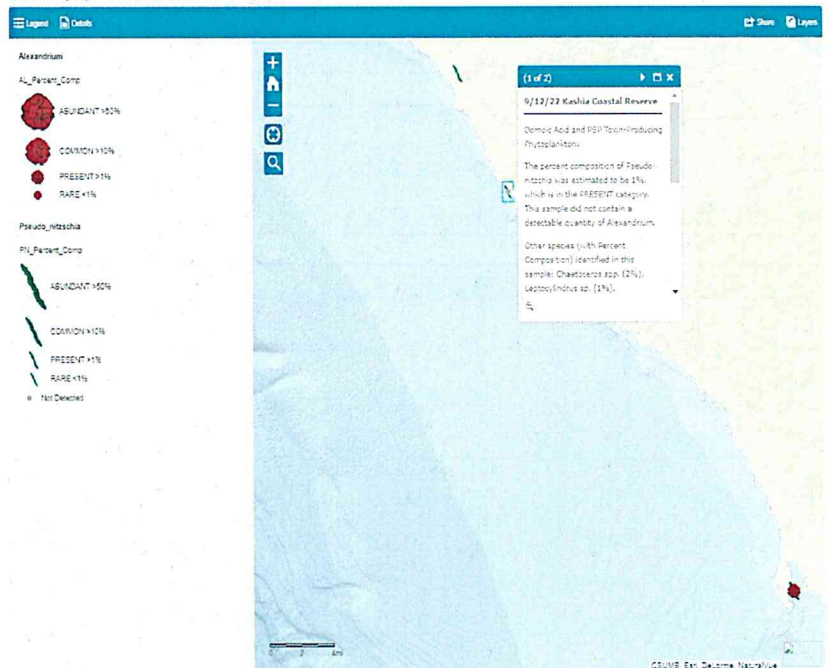
KDEP is now conducting monthly phytoplankton sampling to monitor the presence of toxic phytoplankton.

ample Results for September 2022. Toxic Phytoplankton *Pseudo-nitzschia* detected at an estimated 1%. No detectable quantity of *Alexandrium*.

Shellfish health advisory reported only for San Mateo County. State-wide mussel quarantine still in effect

For current information call CDPH's "Biotoxin Information Line" (800) 553-4133

### Toxic Phytoplankton Observations Map





## Kashia Kids Shine!

Wellness arts and craft day with the kids at the kashia reservation. 11 kids came and some adults; We did painting; beading and had a coloring station. The kids all participated and had fun; we had pizza and donuts for lunch.

